



## NORTH STREET, MIDHURST

North Street, West side  
Dewhurst Butchers



H C Farne Food Hall and Dewhurst Butchers

[Now Costa, and Michael Courtney, Family Butcher; in the old Charles White photo it is the post office.]

### Grade II

Formerly a pair of houses, now two shops with accommodation over. C18. Red brick. Modillion eaves cornice. Tiled roof. Glazing intact above ground floor in south house only. Modern shop fronts. Three storeys. Six windows.

Listing NGR: SU8861021618



### North Street, West side



**Chichester District Council Offices**  
[Now the Clock House, divided into apartments]



#### Grade II

Large late C18 house. Red brick, all headers with rusticated stone quoins, stringcourse and plinth. Wooden modillion eaves cornice. Slate roof. Large two-storeyed five-sided bay, hung with red mathematical tiles, to the south of centre. Venetian window with stone surround and keyblocks on first floor at each end of the front. Glazing bars intact. Rusticated doorway to north of bay with keystone, cornice and semi-circular fanlight. Two storeys and attic. Five windows. Three dormers. South wall uncoursed stone rubble set in galletting.

Listing NGR: SU8862921696

#### Extract from The Midhurst Society Newsletter, March 2003:

We have kept members appraised on the development planned for the building in North Street known now as Clock House, previously as The Vicarage of the Reverend Frank Tatchell. The intention is to convert the building, with additional new build, into flats and two cottages.

Clock House is a listed Georgian Town House and is architecturally outstanding. A well-proportioned brick house with Venetian windows on the first floor and two-storeyed bay windows. It has dressed stone quoins, a Classical cornice and dormer windows above.

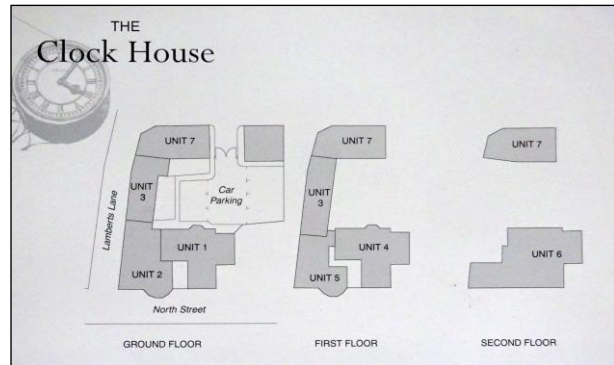
#### Extract from the Georgian Midhurst History Leaflet of The Midhurst Society:

Facing the street a new two-storey Georgian portion was built to the same height as the much-older rear portion (visible from Lambert's Lane) which is of *three* storeys. The new part was so built in order to provide loftier rooms and it has a fine stone cantilever staircase. The canted bays in the front are clad with mathematical tiles – tiles made to look like bricks. This was done in a time when bricks were fashionable but, being taxed, were expensive.

In Rev Tatchell's day, the garden (now a car park) was a delight to see and even featured a water feature.

\*\*\*\*\*

The conversion was marketed by Barrington & Company, who stated: "The Clock House, standing on the corner of North Street and Lamberts Lane, occupies a unique place in Midhurst's architectural history." They also referred to the mathematical tiling (the brick tax was introduced in the 17th century) that would be preserved in the redevelopment.



Five apartments, of approximately 1,000 square feet; a penthouse apartment of 1,200 square feet; and an attached cottage of 1,650 square feet, were offered for sale.

## North Street, West side

### No. 1

#### Grade II

House. C18. Fronted with red brick. Dentilled eaves cornice. Half-hipped tiled roof. Two C19 bay windows on first floor. Glazing bars intact.

Doorway with Tuscan columns, pediment and recessed door in panelled reveals.

Sides

stone rubble on ground floor, tile-hung above.

Listing NGR: SU8863421728





North Street, West side  
Midhurst Club



Nos 47A, 47B and the Midhurst Club  
Grade II SU 8821

One building, three premises. Early C19. Red brick, slate roof. Glazing bars intact. Two doorways, the south one in moulded architrave surround, the north one with a modern pilaster and pediment surround. [Formerly Literary Institute]

Listing NGR: SU8863621755

North Street, West side  
65a and 65

Grade II

One building. C17 or earlier timber-framed building with the timbering and red brick infilling exposed in the north wall but refronted with clunch, now painted. Tiled roof. Casement windows. Modern shop front. Two storeys. Three windows.

Listing NGR: SU8864221766



[Formerly Woolwich Building Society; Visick (petrol), Southdown bus office, and Barrington's estate agents; now

MacMillan Cancer Support and The Midhurst Bakery]

[Northgate Mews, now residential, used to be the bus station.]



North Street, West side  
The Former Stables of the Grammar School  
to the South of the original building

This property is now part of Cowdray Court



**Grade II**

Early C19. Coursed stone with red brick dressings and quoins. Hipped slate roof. Glazing bars intact. Two storeys. The Coach-house is at the east end with three segmental-headed double doors and three windows over. Stables to the west, slightly projecting with five windows. Included for group value.

Listing NGR: SU8864521775

[On the old postcard the Former Stables can be seen on the left-hand side; windows but no doors facing on to North Street. The modern photo is taken from inside Cowdray Court, with North Street to the left.]



North Street, West side  
K6 Telephone Kiosk (Outside Cowdray Court)

[Now owned by Midhurst Town Council and used for the display of information leaflets]

**Grade II**

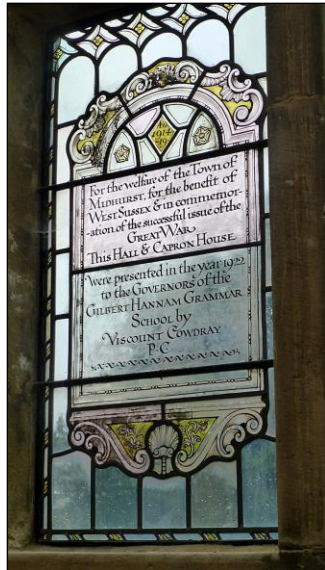
Telephone kiosk. Type K6. Designed 1935 by Sir Giles Gilbert Scott. Made by various contractors. Cast iron. Square kiosk with domed roof. Unperforated crowns to top panels and margin glazing to windows and door.

Listing NGR: SU8865221777



North Street, West side  
The Former Grammar School  
The Old Building [now part of Capron House]

(Formerly listed as: The Grammar School, the Old Building)



#### Grade II

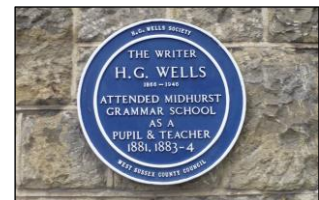
The centre portion is C17. Red brick with a shaped Dutch gable containing an attic window with stone mullions. In front of this is a shouldered projection, also in red brick with a blocked window on either side with drip mould over.

In front of this again is an early C19 stone Gothic porch. This original portion is flanked by early C19 additions of two storeys in stone with a castellated parapet. Slate roof. Gothic casement windows with two or three lights with four-centred heads. Seven windows in all. Large C19 and C20 additions to the north.

Listing NGR: SU8865421805

Note: Attended by H.G. Wells and Charles Lyell  
[Now known as Capron House and in 2020 expected to become the Estate Office of Cowdray Estate; northern portion occupied by the South Downs National Park Authority.]

[Capron House was gifted to the town in 1921 by the 1st Lord Cowdray to celebrate the ending of WW1. It was to be used for education purposes, and when Midhurst Grammar School moved to new premises ownership reverted to the Cowdray Estate. Until recently, the northern end has been used as the HQ of the South Downs National Park Authority, and the southern part leased to a miscellany of local businesses. In 2020, however, the Estate announced they would be relocating the Estate Office from Easebourne into the southern portion of Capron House.



Prior to Cowdray ownership Capron House was in the hands of The Capron family, who moved there in 1804 from Moor Farm, Ambersham. In old Norman French, the word 'capron' means 'wild strawberry'.

In 1833, the Caprons married into the Hollist family, whose crest includes three wild strawberries.]

[In 1807 it was decided to build a wall between Capron House and the Grammar School next door, but the boundary went through a large elm tree. Sir Anthony Capron accepted payment of £5 for the 'sale' of his part of the tree.]



Lord Cowdray gifted Capron House to the town in 1921 'for educational purposes'. When the educational requirement came to an end the building reverted to the Cowdray Estate. (photo: the Gilbert Hannam Education Foundation archive.) (this ceremony believed to have taken place in June/July 1923; the Ven Chancellor E L Ewes and Rev F Tatchell officiating.)

---

North Street, West side

21/13B The Old School Room of the Grammar School

(to the north west of the old school building previously listed)

Grade II

Dated 1821. Ashlar. Eaves bracket cornice. Hipped slate roof. Each window-bay is flanked by pilasters with sunk panels. Modern plastic top hung small paned casements. Porch with pyramidal roof. Inscription above 'Schola Grammaticalis'. One storey. 4 windows.

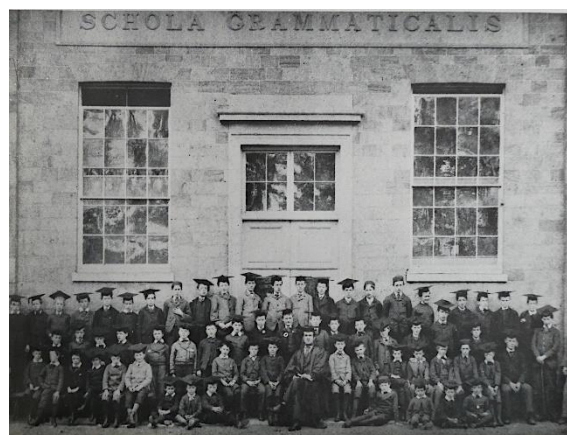
Listing NGR: SU8864321893

[Now the South Downs Memorial Hall]





Photo to the right c1895  
(from the Charles White Collection)




---

North Street, West side

21/14 Nos C134 and 135, Lime and Spice, Indian Restaurant



Grade II

Cowdray Estate Numbers. One building. C18, restored. Faced with roughcast on a stone base. Modillion eaves cornice. Tiled roof. Modern casement windows. First floor of south wall tile-hung. 2 storeys. 5 windows.

Listing NGR: SU8869021890

(formerly Mughal Tandoori, and then Khan's Brasserie; prior to that: Karn's Cafe, Barnes Cafe and Sussex Lodge Restaurant)



North Street, West side

1 – 5 Borough House

(Formerly listed as Borough House)

[Now divided into apartments]

Grade II

House. C18. Faced with rough plaster. Tiled roof. Glazing bars intact. Doorway with pilasters and dentilled cornice. 2 storeys and attic. 3 windows. 2 gabled dormers.

Listing NGR: SU8873521957



[Rear view from Gascoigne Pees brochure, 2003]



North Street, West side

The Almshouses



Grade II 21/17

A late C16 foundation. The building rebuilt in 1840. Early Victorian Tudor gothic style. Stone. Tiled roof. Casement windows and two 4-centred doorways with drip moulds over. One storey and attic. 4 windows. 4 gable dormers. Inscriptions over doorways with Gothic lettering. 'Erected AD 1578 Restored AD 1840'.

Listing NGR: SU8876021976

[Named 'Ognells'] – after George Ognell who funded 'George Ognell's Poor Charity' in the '38<sup>th</sup> Year of the Reign of Elizabeth' (1596) with the stated charitable objectives: "Almshouses for poor persons of good character who are resident in the parish of Midhurst at the time of appointment."

